

**UNION BANK OF INDIA**  
**RO, HOWRAH**  
**NOTICE FOR INVITING TENDERS**

**ONLY FOR EMPANELLED CONTRACTOR**

Sealed tenders/offers on items rate/percentage over estimates/cost basis are invited from our empanelled contractors having sound technical and financial capacity for undertaking **furnishing and civil work** at Dhobaberya Branch given below.

Interested empanelled contractors may visit our Bank's website [www.unionbankofindia.com](http://www.unionbankofindia.com) and Govt. portal [www.eprocure.gov.in](http://www.eprocure.gov.in) and requested to study the drawings /go through the tender documents, specifications as per Bank's standardization and in case of any difficulty please visit us for seeking clarification, if any, prior to submission of their sealed offers.

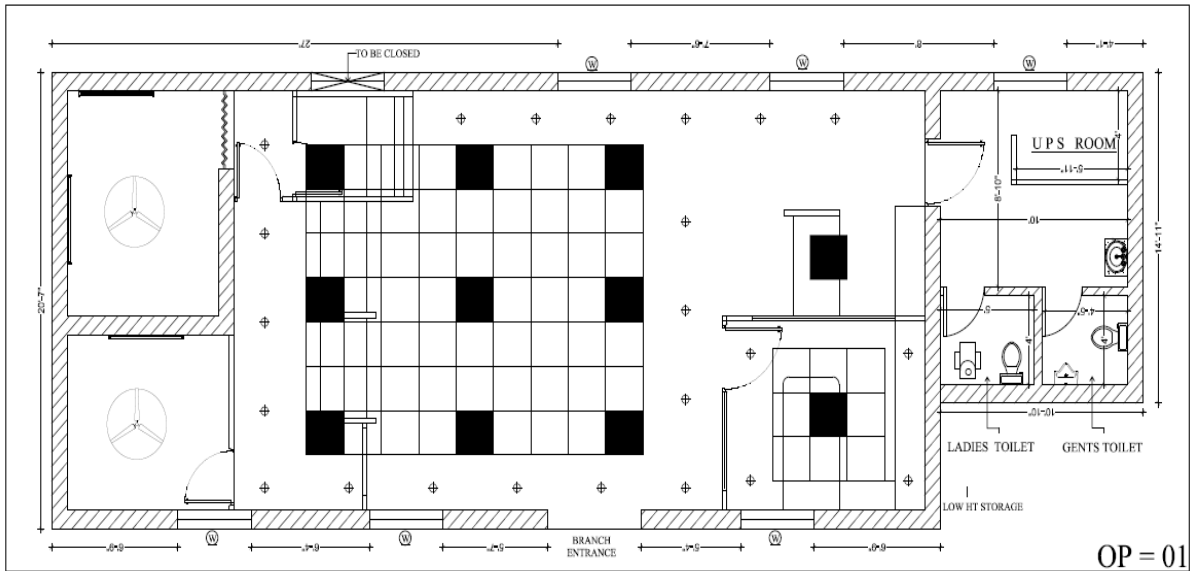
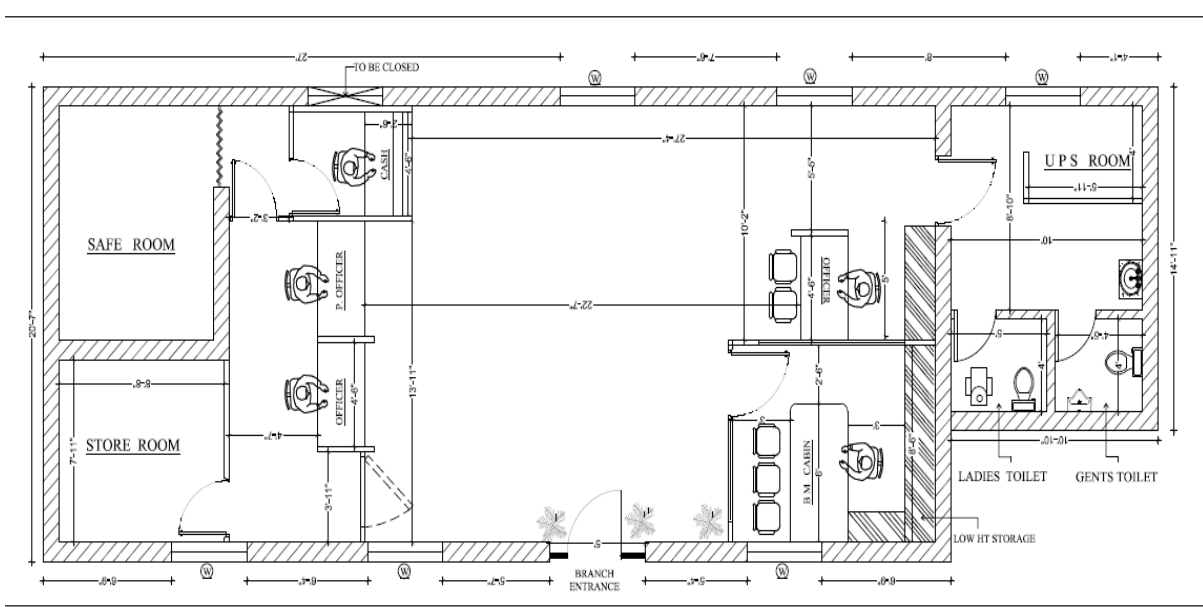
Estimated cost of works for Branch	Rs. 4.00 Lacs (Electrical Work)
Tender Cost	Rs.1000/- (Non-refundable) by DD / Pay Order favouring Union Bank of India, payable at Howrah. Offer without document / Tender cost will be summarily rejected.
1. EMD  2. Performance Security	Bidders will be required to submit EMD of Rs.8,000/- in the form of D.D. in favour of Union Bank of India, RO, Howrah, payable at Howrah.  Successful bidder is required to deposit Performance Security of Rs.20000.00 in form of Demand Draft/Bank Guarantee/Fixed Deposit from receipt from commercial Bank in favour of Union Bank Of India valid for 60 days beyond the date of completion of work.  Tenders without Tender cost / EMD shall be summarily rejected. Contractors registered with MSME / NSIC or the concerned Ministry or Department notified time to time by Govt. of India/CVC can seek exemption from cost of RFP and EMD by providing valid registration certificate along with the document. Incomplete application will not be considered.
Retention Money	Retention money at 8 % of total work order will be deducted from final bill and to be held with the bank for defect liability period (one year) and will be released only after completion of Defect liability period on vendor's request.
Time of Completion of work	45 days from acceptance of work order. Work to Start immediately after getting the work order.
Time & Submission of Tender	Before 3.00 P.M. on 16.07.2024
Time & date of Opening of Tender	3.30 P.M. on 16.07.2024
Address of Work Site	Dhobaberya Gram Panchayat Vill: Kendua, Block Deshpran Contai-II PO: Sofiabad, Dist: East Medinipur West Bengal-721442

The bank will not be bound to accept the lowest tender and reserves the right to accept or reject any or all the tenders without assigning any reason.

Dated: 05.07.2024

Howrah

**Chief Manager (Operations)**



OP = 01

**BUDGETARY ESTIMATE OF ELECTRICAL WORKS FOR UNION BANK, DHOBABERIYA BRANCH**

SL.N O.	PARTICULAR	Uni t	Quanti ty	Rat e	Amount
<b>1</b>	<b>PANEL &amp; DISTRIBUTION BOARDS.</b>				
<b>1.1</b>	<b>MAIN PANEL</b>				
	Supply , Installation Testing & Commissioning of Main LT Panel wall mounted front operated totally enclosed , vermin proof , indoor non drawout-cubicle type ,power panel fabricated out of 2mm thick CRCA sheet having gasketed hinged cover on each cubicle fully power coated/enamel painted after seven tank treatment incorporating horizontal and vertical sleeved copper bus bar complete with all internal wiring danger board , two earthing earthing terminal ( including nut ,bolt and washer) . On top side of the panel, cable entry arrangement is to be done for incoming and outgoing of lines. One 6" x 4" enamel type 440 Volts danger board to be fixed on the main panel busbar cover. All switches are front handle operated and all MCB knob should be visible. All componenets are to be provided in separate compartment and as per details below				
	1 No. 100 A, 35 KA, 4P MCCB, as Incomer				
	1 No. 100 A, 35 KA, 4P on Load Changeover switch as Incomer				
	4 Nos. 100 A Copper Bus bar				
	2 Nos. 40 A DP MCB For UPS Incomer				
	2 Nos. 40 A TP MCB				
	6 Nos. 25 A SP MCBs				
	6 Nos. 16 A SP MCBs				
	6 Nos. 10 A SP MCBs				
	Ammeter 0-100 A with 3 Nos. CT & selector switch 96 x 96 mm-01 set (A.E make) (CT ratio 100/5) A.E. make - 1 set				
	Voltmeter-0-500 Volt A.C. 50 Hertz 96 x96 mm with selector switch (A.E make)-01 set				
	22 mm dia LED indicator Lamp - 6nos				
	02 AMPs sliding fuse - 6 set				
	150 x 100 mm enamel danger board 440 Volt(to set on bus bar cover) - 1 no				
	Complete Set as Above	NO	1.00		-
<b>1.2</b>	Supply and fixing of 100 AMPs TPN HRC type SFU for main incoming on MS angle frame and 02 nos. cable end box including connection complete with wire, lug, pvc tape	NO	1.00		-
<b>2</b>	<b>DISTRIBUTION BOARD</b>				
	S& F Flush Type, powder coated, Double door front opening & front operation system complete in all respect. As following.				
<b>2.1</b>	<b>Lighting D.B. (TPN 12wayDB)</b>	SE T	2.00		-
	i) Incoming 1no.40A TPN MCB				
	ii) Outgoing 10 Nos. 6/20A SP MCB.				
<b>2.2</b>	<b>POWER DB (TPN4way DB)</b>	SE T	2.00		-
	i) Incoming 1no.63A TPN MCB				
	ii) Outgoing 8 Nos.16/20/25A SP MCB.				

2.3	UPS D.B.(TPN 12wayDB)	SE T	2.00		-
	i) Incoming 1No.32A DP.MCB.				
	ii) Outgoing 8Nos. 6/25A SP MCB.				
3	<b>CABLES AND CABLE END TERMINATION</b>				
3.1	Supply & Laying of 4.0 C X 35 Sqmm Al. Ar. XLPE Cable From Meter room to Panel including cable End Termination	MT R	28.00		-
3.2	Supply & Fixing 3.5 C X 25 Sqmm Al. Ar. XLPE Cable From DG to Panel including cable end termination.	MT R	28.00		-
3.3	Supply & Fixing 3.5 C X 25 Sqmm Al. Ar. XLPE Cable From panel to power DB including cable end termination.	MT R	30.00		-
3.4	Supply & Fixing 4.0 C X 10Sqmm Al. Ar.XLPE Cable From Panel to Lighting DB including cable end termination.	MT R	25.00		-
3.5	Supply & Fixing 3.0 C X 10 Sqmm Cu. PVC Insulated wire(FRLS) in PVC Conduit (from panel to UPS DB ) including cable end termination.	MT R	28.00		-
3.6	Supply & Fixing 3.0 C X 6 Sqmm Cu. PVC Insulated wire(FRLS) in PVC Conduit (from UPS DB to UPS) including cable end termination.	MT R	20.00		-
4	<b>WIRING</b>				
4.1	<b>Wiring for Light Point with 20 mm PVC pipe with 2x2.5 Sqmm (FRLS)wire and 1x1.5 Sqmm green earth (FRLS)wire for light Points as reqd. complete with modular switch with front plate through HMS/MMS grade PVC conduit</b>				
4.1.1	Two light controlled by 6A switch	NO S	8.00		-
4.1.2	Three light controlled by 6A switch	NO S	12.00		-
4.1.3	Exhaust fan point with 6 A sw complete with modular switch plate & M.S conceal box & 3 pin ceiling rose.	NO	2.00		-
4.1.4	Fan point complete with modular switch plate & M.S conceal box & 3 pin ceiling rose with electric regulator, modular type.	NO S	10.00		-
4.1.5	Call bell point with push type switch, modular plate & M.S. conceal box with buzzer or ding dong type bell	NO	1.00		-
5	<b>RAW POINT WIRING-The wiring shall pass through PVC pipe of 20 mm dia with ISI mark to conceal on wall below false ceiling mending good all the damage</b>				
5.1	Supply, laying of circuit line 2x2.5 sq.mm +1 x 1.5 Sq.mm PVC insulated copper (FRLS)wire from MCB type lighting DB to 6 amp plug points (3 nos. 6 Amps plugs to be connected from one circuit line)through 20mm dia PVC conduit HMS/MMS grade	MT R	220.00		-
5.2	Modular type 6 A switch with 6A 5 pin socket . Mounted on suitable front plate	NO S	8.00		-

5.3	Wiring for Power Point 6/16 A Switch & Socket with 25mm PVC pipe with 2x2.5 Sqmm (FRLS)wire and 1x1.5 Sqmm green earth (FRLS)wire for Power Points as reqd. This line has to be drawn from the power DB. (02 nos. plugs to be connected with one circuit)	MT R	120.00		-
5.4	Modular type 6/16 A switch. with 16A 5 pin socket . Mounted on suitable front plate	NO S	8.00		-
6	<b>UPS WIRING</b>				
6.1	Wiring for Power Point 6/16 A Switch & Socket with 25mm PVC pipe with 2x2.5 Sqmm (FRLS)wire and 1x1.5 Sqmm green earth (FRLS)wire through PVC conduit 20 mm dia 16 SWG with ISI mark to lay from UPS MCB DB to plug point board through HMS/MMs grade PVC conduit	MT R	300.00		-
6.2	Supply and fixing of 2 x 6 Amps 5 pin socket + 1 x 16 amps 6 pin socket in single board (under table) + 1 x 16 A switch (Modular switch + socket) in another board above table as per direction	SE T	12.00		-
6.3	Do- but 3 x 6/16 , 6 pin socket with three control switch to provide near HUB Rack and line printer to be connected from UPS power.	SE T	2.00		-
6.4	Supplying, installation of UPS incoming 32 Amps industrial socket with 32 Amps SPMCB (2 nos. for out going and 2 nos. for incoming) for 2 Nos UPS	SE T	2.00		-
7	<b>DATA/ TELEPHONE-LOW VOLTAGE SYSTEM</b>				
7.1	Supplying, laying and connection of telephone points with 2 pair .51 sq.mm tinned Cu conductor through PVC casing ISI mark from telephone point to Krone DB complete with RJ 11 telephone socket modular type in PVC concealed box.	NO S			-
7.2	Supply, fixing and connection of 10 pair KRONE connector DB complete with PVC moulded Telephone DB box with locking system	SE T			-
7.3	Providing and laying Cat 6 cable ( Make : Dlink ) for data in existing conduits and providing & terminating with RJ-45 ( krone make ) with face plates / I/O port in suitable modular / MS box from server / EPABX room to individual work stations and terminating other end with RJ-45 connector including numbering with ferule .				
	RJ-45 for Data Points	PTS	8.00		-
8	<b>ELECTRICAL FIXTURES</b>				
8.1	Recess mounted 600x600 fittings LED 36W 6K similar to Philips/ Wipro or equivalent	NO S	11.00		-
8.2	15 W, LED 6K,Spotlight flush mounted Philips/ Wipro or equivalent	NO S	23.00		-
8.3	1 X 20W LED Tubelight having white lamp	NO S	6.00		-
8.4	9" heavy duty exhaust fan with louver in toilet / pantry inclusive of hole cutting in the wall and finished with plastering complete	NO	3.00		-

8.5	Wall Hung fan complete with all fitting and mending good all damages	NO S	10.00			-
9	Providing <b>Change over switch</b> (adequate rating) for generator including wiring & installation.	NO	1.00			-
10	<b>AIR CONDITIONER</b>					
10.1	Supply & fixing of starter with 3 pin plug in recessed MS box suitable for 1.5TR AC.	NO S	4.00			-
10.2	Supply and Fixing in 25mm PVC Pipe with 2 x 4 sq. mm + 1 x 1.5 sq. mm(FRLS) Cu wire For Single phase A/C Point Complete & reqd.	MT R	320.00			-
10.3	Supplying , fixing of AC Timer (24 hours in original housing)	NO	1.00			-
11	<b>GLOW SIGN BOARD</b>					
11.1	Supplying, laying of main line with 2 x 2.5 sq. mm + 1 x 1.5 sq. mm(FRLS) through pvc conduit from main panel to glow sign board	MT R	20.00			-
11.2	Supplying , fixing of 16 Amps DP MCB at main entrance with Glow sign board timer (24 hours in original housing)	SE T	1.00			-
12	<b>EARTHING</b>					
12.1	Wiring of Earthing Continuity wire with 2 X 8 SWG G.I wire or 2 X 19mm X 8mm.G.I Flat from Main panel to G.I pipe earthing Stn.	MT R	25.00			-
12.2	Supply & Fixing 25x 3 mm GI Earth Strip 2no, Earthpit to Panel	MT R	25.00			-
12.3	Supply & Installation of earth pit comprising of 600mmX600mmX4 mm thick copper plate buried at a minimum depth of 2.5m including necessary materials like charcoal , salt etc. as required conformint to IS 3043 having brick masonary chamber with hinged cover and watering arrangement etc.	NO S	2.00			-
12.4	Supply & Fixing 25 mm PVC Pipe with 8 SWG 2 no, Copper bare wire for Earthing.	MT R	25.00			-
13	Making Temporary arrangement to keep branch in running condition. (labour & material charges)	Job	LS			
<b>TOTAL AMOUNT</b>						